



WMIP e-bulletin April 2025

A message from WMIP's new Co-Chairs, Laura Chaisty and Shane Sneyd

Dear Members

As we begin our roles on the Board, we wanted to share a little about how we're finding our feet.

We're really grateful to the membership for voting us onto the Board, and we very much hope to work alongside our colleagues to maintain the steady hand so ably provided by Pauline, Diana, Brian, and Phil. We're fortunate that Diana, Brian, and Phil are continuing as Trustees and are ever grateful for their expertise and practical, down-to-earth handling of many aspects of the organisation we are still getting to grips with.

We want to acknowledge the quiet, consistent, and conscientious presence Pauline has brought over the past five years. We hope to follow in her footsteps while inevitably bringing some different qualities of our own.

Joining the Board has meant learning the various processes and structures that keep WMIP running behind the scenes. It's been a rewarding learning curve, made much smoother by the support and generosity of the Trustees, as well as the guidance and encouragement of Jools and Kate.

In recent weeks, we've each taken up different strands of board-related activity. One of us was involved in the recent MAPT (BTPP) re-registration with the BPC. The BPC concluded that the training being offered by MAPT was "excellent," and they made special mention of the positive relationship between WMIP and MAPT, noting that it contributed significantly to the overall success of the training. Thanks to Philippa Boulter for her steady and thoughtful work in supporting and co-ordinating the training.

We've begun to develop our understanding of the various groups both within WMIP and among the special interest groups associated with the organisation. We hope to learn more about the work being done and to create connections between groups to foster mutual support. We are also looking to work with colleagues to organise an away day for those involved in the workings of WMIP.

Shane has made efforts to develop links with the Balint group, with a view to strengthening connections that may benefit the organisation.

In addition, work is ongoing with DECCA to support delivery of a new training programme designed specifically for their staff. The course, titled *Working Beneath the Surface*, offers a psychoanalytic perspective on adolescence and aims to deepen understanding and enhance professional practice. Several WMIP members will be involved in delivering the training, providing a valuable opportunity to showcase the depth of expertise within our community and to strengthen our external partnerships through shared learning. If any other members are interested in being involved, we'd love to hear from you. It's a great development for WMIP to be approached and recognised as a centre for analytic thinking and practice within the region.

We're also working to strengthen links with Birmingham and Solihull Mental Health Trust, which serves the city. Laura is in discussion about how we might reach out to staff with an interest in the work of WMIP.

With CPD in mind, we want to remind you of two forthcoming WMIP events:

28th April: Julian Bion will speak about his father, including deeply personal material that brings context and humanity to a central theorist and practitioner of psychoanalytic psychotherapy. Laura has previously heard this presentation and recommends Julian's

7th July: David Smith from the Northern Irish Institute of Human Relations (NIIHR) will present his paper on the film *The Quiet Girl*. Among other achievements, David ran a successful analytic film group for several years at NIIHR and kindly offered advice when WMIP was setting up its own. We're delighted to now host his presentation on this profound and moving film. Look out for further details soon.

We're looking forward to the year ahead, and to finding meaningful ways of supporting members and strengthening our shared community. Do keep an eye out for future events—our timetable is already starting to fill up. If you're curious about board involvement or interested in joining us, we'd love to hear from you. We're especially keen to welcome new voices and perspectives, so do get in touch with either of us (Laura or Shane) for a conversation.

With thanks, and warm wishes,

Laura and Shane

Co-Chairs, WMIP

Date	Speaker	Title	Venue
Monday 28 th April 2025 (7:15pm – 8:45pm)	WMIP: Prof Julian Bion	Getting to know my father Wilfred Bion	Online via Zoom
Saturday 10 th May 2025 (10.15am – 12.45pm)	APT: Birmingham Dale Mathers	Dreams: The Basics	St Paul's Convent, 94 Selly Park Road, Selly Park, Birmingham, B29 7LL and via Zoom Video Conferencing
Saturday 7 th June 2025 (10.15am – 12.45pm)	APT: Birmingham Jay Barlow	The Umbilical	St Paul's Convent, 94 Selly Park Road, Selly Park, Birmingham, B29 7LL and via Zoom Video Conferencing
Saturday 15 th June 2025 (1:30pm - 3:30pm)	BTPP Elizabeth Dennis	Approaching Death and Dying	BTPP, Studio 322, Custard Factory, Gibb Street, Birmingham, B9 4AA
Monday 7 th July 2025 (7:15pm – 8:45pm)	WMIP: David Smith	A paper analysing the film <i>The Quiet Girl</i>	Online via Zoom

WMIP CPD Strategy group are looking for new members with new ideas and enthusiasm to ensure WMIP continue to deliver topical events, focusing on relevance to our members. Please do get in touch with Kate Leeson (kate@klevermarketing.co.uk) if you have an idea you would like support to develop or if you are interested in working on developing WMIP events.

Keep checking the events page on the WMIP website for details

Membership News

The Membership Committee is pleased to welcome the following new members to WMIP:

We hope that they will find their membership enjoyable and fruitful.

Basia Gasiorek is changing her category from Professional to Retired member. We thank her for all she has done for WMIP and wish her a happy retirement.

Membership Committee

We would love to see you at our next WMIP online event:

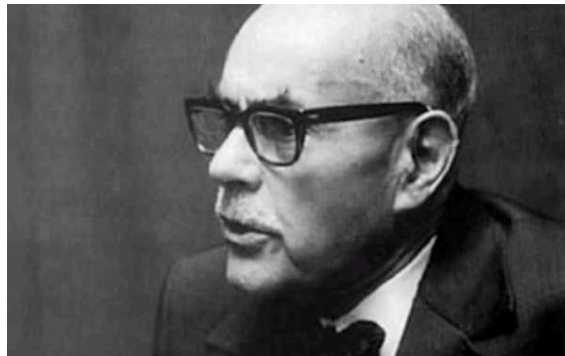
**Getting to know my father Wilfred Bion, with Professor Julian Bion, OBE
Monday 28th April 2025 7:15pm - 8:45pm Via Zoom Video Conferencing**

Come along and listen to Julian, son of influential psychoanalyst Wilfred Bion. In this talk, Julian will describe his father's life and character, reflect on experiences of his father and the impact he had on him as child and adult.

Julian Bion was Professor of Intensive Care Medicine at University Hospitals Birmingham from 1987 until 2017. He continues to support UHB in the role of Freedom To Speak Up Guardian. He has received numerous national and international awards, and was appointed OBE in 2018.

Please share with friends and colleagues who may be interested.

For more information and to book please contact Jools email admin@wmip.org



TO BOOK email Jools our administrator [HERE](#)

APT: Birmingham Public Lecture series

**Dreams: The Basics with speaker Dr Dale Mathers MB. BS.
Saturday 10th May 2025 in person and via Zoom**

This seminar is an introduction to dreams: how they are made, what they are made with and what they are made for. Dreams are a natural product of the unconscious mind, as it does its nightly task of helping us understand the world and our place in it, bridging between conscious and unconscious. They are an essential part of a culture's psychological eco-system, and not a personal possession. Dreams evolve memory, which has a predictive function, letting us guess what is next up. Dreams are creative play-spaces, which develop empathy. They have a transcendent function, moving between and beyond ego and self. Sometimes, dreams are the source of religious, political, and spiritual insights. However, most are not remembered.

The seminar includes an account of dreaming based on the latest neuropsychological research. Detail about 'the three network model' - a best guess at how the mind works - is evolving. This brings together insights from both Freud, Jung and the humanistic therapies. Personally, I feel 'work' is the last thing a dream needs. They are gifts from our unconscious, for our conscious to play with. The less solemn you are in your approach, the more you'll discover from their ever-changing symbols.

The Umbilical with speaker Jay Barlow Saturday 7th June 2025 in person and via Zoom

Traditional psychoanalytic approaches view excessive parental, social or relational involvement in human development as an opportunity for linking complex gender and identity experiences. The analyst's unconscious bias might present an opportunity for interpretation that could resemble something akin to conversion therapy. All of which leaves the patient feeling alienated and confirming their exiled Self. Early relational trauma affects every gender and sexual identity. Each traumatic situation, from inappropriate interference to traumatic abuse, affects how an individual forms and experiences relationships.

Gender and sexual identity are fluid agencies of the Self within all human development. For people who are non-normative when it comes to gender, identity or sexuality, evidence of early relational trauma should not unthinkingly be treated alongside mental health struggles. This clinical paper explores once weekly analytic work with a young, exiled transman who lived in a dysregulated state of mind from his early relational trauma. It uses Louise Bourgeois's images to explore the early development of projective identification and proposes that this becomes a way of exiling unwanted feelings into the other with hopes of finding a place of belonging – as if through a psychic umbilical.

For more information, please contact Sue Harford 07789 545908 aptc@wmip.org
www.aptc-birmingham.co.uk

APT: Birmingham- An Introduction to Analytical Psychotherapy course

EARLY BIRD fee available until 30th June

A short CPD course to explore key concepts of Jungian psychotherapy

The Analytical Psychotherapy Training: Birmingham warmly invites you to join a short 10-week course this autumn in central Birmingham. In a small group setting, led by experienced psychotherapists, we will cover the key clinical ideas of analytical psychotherapy, including the analytic frame, transference, working with dreams and mother/infant research. The course will include attendance at our keynote public lecture, on the 1st November 2025.

For more information, please contact Sue Harford 07789 545908 aptc@wmip.org
www.aptc-birmingham.co.uk



Member news and views

Shalini Masih- Ghosts as Gurus: Learning from experience in the Aesthetic Vertex

On 10th February over thirty members and associates of WMIP and interested parties came together to hear a fascinating paper authored and presented by Shalini Masih. The paper titled Ghosts as Gurus presented Shalini's exploration into an interface between psychoanalytic thinking and culture and how the latter in particular, informs our ideas of sanity and madness. She reflected on a broader question about whether psychoanalytic ideas can be translated across time and cultures and in this way, she joins a current cannon of thinkers reviewing and contextualizing the theories and practice of psychoanalysis. She invited us to think about the cultural context that informs our patients experience but also that influence how we are able to listen to our patients. She explored whether as analytic and psychoanalytic practitioners we can, out of a desire to remain faithful to our model, listen with a kind of filter that prevents us from hearing the resonances of the persons culture as a governing factor in how they present their stories and experience suffering.

Shalini grew up in a Christian Indian family where through the practices of her grandparents she experienced the power of spiritual healing including mediumship where suffering manifests as possession and engagement with the ghosts brings understanding. She

healing sites she describes how distress was projected using the cultural language of ghosts and spirit possession which she saw as psychic representations the minds attempt to grapple with unthinkable emotional experiences. The patience required to stay with the incoherent and to travel slowly towards meaning is familiar territory for analytic practitioners though here, Shalini draws our attention to the space that oscillates somewhere between the symbolic and concrete as the demons possessing those she works play a central part in their orientation through faith. Shalini's paper was rich and poetic and invited an opening of our minds to reflect on how psyche both shapes and is met within our cultural context. She emphasised the central place of faith, play and love in understanding and addressing religious phenomena. Her more recent work in the UK has attracted people of a number of different faiths to engage in analysis where previously they had felt their beliefs in spirits, demons and possessions had been othered and unwelcome in Psychoanalysis. Though Shalini took a psychoanalytic perspective in the audience discussions there were a number of references to Jung's work on the collective unconscious as well as early explorations into spiritualism and his red book investigations into what might be thought of his own inner ghosts.

Shalini Masih is a psychoanalytic psychotherapist and writer whose work is deeply rooted in her upbringing in India. Her academic appetite is matched with passion for healing and she has honed her craft, exploring the complexities of the human mind. She was awarded the prestigious Critics Award for Best Psychoanalytic Writing in 2018 for her paper 'Devil! Sing me the Blues – A Life Struggling to be Born,' and she has recently published her first book 'Psychoanalytic Conversations with States of Spirit Possession: Beauty in Brokenness'(Psychoanalytic Studies: Clinical, Social, and Cultural Contexts) Now based in Worcestershire, Masih continues to weave together her Eastern roots and Western training, creating a unique tapestry of psychoanalytic practice.

Laura Chaisty



You are able to raise money for the West Midlands Institute of Psychotherapy when you are shopping online at over 4,000 top stores including John Lewis & Partners, Expedia and Marks & Spencer. When you shop via Give as you Live Online, they'll turn a percentage of your spend into free funds for us! Simply go to your chosen retail store, select the retailer and start shopping.

SHOP via GIVE AS YOU LIVE and the WMIP page [HERE](#)



Our mailing address is:

West Midlands Institute of Psychotherapy
66 Smirrells Road
Hall Green
Birmingham
B28 0LB
Tel: 07903740512

Company Limited by Guarantee (No 2883306)

Registered Charity (No 1031011)

Member of [UK Council for Psychotherapy](#).

Want to change how you receive these emails?

You can [update your preferences](#) or [unsubscribe from this list](#)

This email was sent to <<Email Address>>

[why did I get this?](#) [unsubscribe from this list](#) [update subscription preferences](#)

West Midlands Institute of Psychotherapy · Naim House · 1174 Stratford Road · Birmingham, west midlands B28 8QA · United Kingdom

[Subscribe](#)

[Past Issues](#)

[Translate ▼](#)

[RSS](#)

